

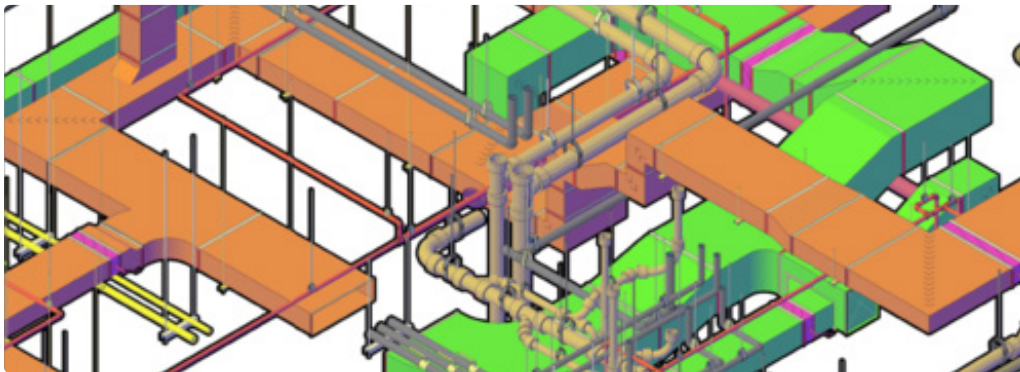


NJT New Garfield Station

Design to link Old Garfield Depot and Plauderville Depot

Under NJ Transit GEC Contract, AG was responsible for design documents for the New Garfield Transit Station in Garfield, NJ. Specific tasks included station and parking area lighting, station power, CCTV, fire protection and ventilation systems. The platform amenities included public telephones, vending machines, public address loud speakers, and directional signage and information kiosks.

Design issues: the station with mini-high platforms and passenger crossings are ADA compliant to meet the needs of the physically challenged; platform canopies were designed according to NJT standards; customer shelter is a 3-sided shelter with radiant heat, similar to a shelter at Boonton Station.



Location:
Garfield, NJ

Owner:
New Jersey Transit

Client:
Parsons

Completion Date:
2011

Services Provided:
Electrical
Power for lighting
Fire Protection
Ventilation systems
CCTV and PA systems

A.G. Consulting Engineering, PC
131 W 33rd Street, Floor 12
New York, NY 10001
212-268-0950
agceng@agceng.com
www.agceng.com